

SAILING INSTRUCTIONS

- [DP] denotes a rule for which the penalty is at the discretion of the International Jury and may be less than disqualification.
- [NP] denotes that a breach of this rule will not be grounds for a protest by a board.
- [SP] denotes a rule for which a standard penalty may be applied by the race committee without a hearing.

1. RULES

- 1.1 The regatta will be governed by the rules as defined in the Racing Rules of Sailing – Windsurfing Competition Rules (**WCR**) and the Class Championship Rules (**CCR**).
- 1.2 No national authority prescription will apply.
- 1.3 If there is conflict between the Notice of Race and these Sailing Instructions the Sailing Instructions will take precedence. **This changes WCR 63.7.**
- 1.4 If there is a conflict between languages, the English text will take precedence
- 1.5 [DP] [NP] Event lycras if provided shall be worn outside any other clothing or equipment at all times when afloat and during media interviews ashore.
- 1.6 [DP] [NP] Event lycras and event stickers shall not be cut, trimmed or altered in any way.

2. NOTICES TO COMPETITORS

Notices to competitors will be posted on the Official Notice Board located next to the secretariat on the pavilion

3. CHANGES TO SAILING INSTRUCTIONS

Any change to the sailing instructions will be posted on the Official Notice Board at least 60 minutes before the scheduled start of any race on the day that it takes effect, except that any changes affecting the schedule of the next day's racing shall be posted not later than 60 minutes after the end of the last race of the day.

4. SIGNALS MADE ASHORE

- 4.1 Signals made ashore will be displayed at the Official Flag Pole located in front of pavilion next to the ramp
- 4.2 When the **AP Flag** is displayed, '1 minute' is replaced with 'not less than 30 minutes'. **This changes WCR Race Signals.**
- 4.3 When the **D Flag** is displayed the Safety System is in force.

5. RACE SCHEDULE and FORMAT

- 5.1 The schedule, and format, of races will be as specified in the Notice of Race.
- 5.2 'Back to back' races will be run.
- 5.3 To alert boards that a race or sequence of races will shortly begin, an Orange Flag may be displayed (with one sound) at least 5 minutes before a warning signal is displayed. No sound will be made when the Orange Flag is lowered.

- 5.4 The warning signal for the last race of each day shall not be made later than 19.00hrs, except on the last day when the last possible warning signal shall be at 16.00hrs

6. CLASS FLAG

The class flag will be: Yellow flag – displaying the class logo

7. RACING AREA

- 7.1 The racing area is defined as an area extending 75m beyond the course including the starting line, the finishing line and their extensions, in which a board would normally sail while racing.
- 7.2 [DP] Boards not racing shall avoid the racing area.

8. COURSES

- 8.1 The course to be used shall be published on the ONB, and, at the daily skippers meeting.
- 8.2 If more than one course option is prescribed for the days racing, no later than one minute before the warning signal the Race Committee Signal Boat shall display the course to be sailed on a white board.

9. MARKS

The starting *marks*, finishing *marks* and *marks* of the course will be as described on the course illustration.

10. THE START

- 10.1 Races will be started using WCR 26.
- 10.2 The starting line will be between two masts with orange flags positioned on starting *marks* as described on the course illustration.
- 10.3 A board starting later than 4 minutes after her starting signal will be scored Did Not Start. **This changes WCR A4 and A5.**
- 10.4** If flag I has been displayed, and any part of a boat's hull, crew or equipment is in the triangle formed by the ends of the starting line and the first *mark* during the last minute before her starting signal, she shall thereafter sail from the course side across an extension to the pre-start side before *starting*. **This changes WCR 30.1.**
- 10.5 When an individual recall has been signaled, or a board breaks rule 30.3, the Race Committee will display the sail number(s) on a white board on the back of the Race Committee Signal Boat before the first board has finished that race. Failure to display the sail numbers(s) will not be grounds for redress. **This changes WCR 62.1(a) and A5.**

11. THE FINISH

The finishing line will be between the mast with blue flag on the RC boat and the finishing buoy as described on the course illustration.

12. TIME LIMITS, TARGET TIMES & REST PERIOD

- 12.1 The time limits and target times are as follows:
- | | |
|------------|------------|
| Time limit | 40 minutes |
|------------|------------|

2016 AZORES FORMULA WINDSURFING WORLD CHAMPIONSHIP
Praia da Vitoria, Terceira, Azores, Portugal 12th to 19th November 2016

Target time	15>20 minutes
Mark 1 time limit	12 minutes

- 12.2 If no board has passed mark 1 within the Mark 1 time limit, the race will be abandoned.
- 12.3 A board failing to finish within 20 minutes after the first board in her group/division sails the course and finishes, will be scored Did Not Finish (DNF) without a hearing. **This changes WCR's 35, A4 and A5.**
- 12.4 Rest Periods-Back to Back races. The warning signal for a subsequent race on the same day will be made as soon as practicable, except that the minimum interval between the closing of the finishing line and the new warning signal for that group/division will be 10 minutes.
- 12.5 Rest Periods-Ashore. If two races have been sailed back to back there shall be a rest period of a minimum of 30 minutes ashore for the last finisher per group/division in the second race, before the warning signal for further races.

13. PROTESTS & REQUESTS FOR REDRESS

- 13.1 Protest forms are available at the Race Office. Protests and requests for redress shall be delivered there within the appropriate time limit.
- 13.2 **[DP]** **[NP]** Boards retiring from racing after finishing shall complete a Retirement Declaration Form at the Race Office before the end of protest time limit.
- 13.3 **[DP]** **[NP]** Boards taking a voluntary penalty shall complete the Penalty Acknowledgement Form at the Race Office before the end of protest time limit.
- 13.4 The Protest Time Limit is 45 minutes after the last board has finished the last race of the day for each group/division or the Race Committee signals 'no more racing today', whichever is later.
- 13.5 Notices will be posted no later than 30 minutes after the protest time limit to inform competitors of hearings in which they are parties or named as witnesses. Hearings will be held in the Protest Room, located near the Race Office.
- 13.6 Breaches of WCR 77 and rules in the Sailing Instructions marked **[NP]** will not be grounds for a protest by a board. **This changes WCR 60.1(a).** Penalties for breaches marked **[DP]** are at the discretion of the protest committee may be less than disqualification if they so decide.
- 13.7 On the last day of the regatta a request for reopening a hearing shall be delivered:
- Within the protest time limit if the party requesting reopening was informed of the decision on the previous day;
 - No later than 30 minutes after the party requesting reopening was informed of the decision on that day.
- This changes WCR 66.**
- 13.8 On the last scheduled day of racing a request for redress based on jury decision shall be delivered no later than 30 minutes after the decision was posted. **This changes WCR 62. 2.**
- 13.9 Decisions of the International Jury will be final as provided in WCR 70.5.

14. SCORING

- 14.1 Scoring will be according to the WCR Appendix A, as amended by the Championship Rules.
- 14.2 To request correction of an alleged error in the posted races or series results, a board shall complete a Scoring Enquiry Form available at the Race Office.

15. SAFETY REGULATIONS

- 15.1 [DP] [NP] A board that retires from a race shall, if reasonably possible, notify the Race Committee before leaving the course area and shall report to the Race Office upon arriving ashore.
- 15.2 [DP] [NP] Competitors not leaving the site for the day's racing shall inform the Race Office prior to the first start.

16. SAFETY SYSTEM

[SP] The Safety System, if prescribed, is Championship Rule #12.2.

17. REPLACEMENT OF EQUIPMENT

[DP] Substitution of damaged or lost equipment will not be allowed unless approved by the Race Committee. Requests for substitution shall be made to the Race Committee at the first reasonable opportunity, including a written request, on the form provided, submitted to the Race Office.

18. OFFICIAL BOATS

- 18.1 [NP] Race Committee boats may display a white flag with letters 'RC' in black.
- 18.2 [NP] Media boats shall display a white flag marked with a black letter "M".

19. SUPPORT BOATS

- 19.1 All teams support boats shall conspicuously display the national flag of their country of origin
- 19.2 Before the Preparatory Signal of any class, support craft shall have left the course areas and remain outside the area, except to assist a crew in distress or at the request of the race committee, until after the finish of the last competitor of the final class racing or the races are postponed or abandoned. Infringements will be subject to action by the Race Committee which may result in preventing a support boat from going afloat.

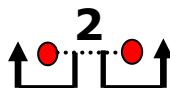
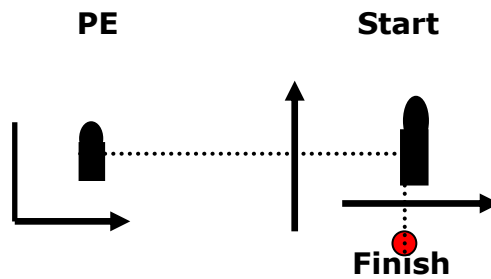
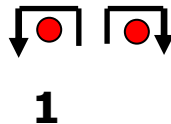
20 TRASH DISPOSAL

[DP] [NP] Boards shall not put trash in the water. Trash may be placed aboard support and Race Committee boats.

21 PRIZES

- 21.1 Prizes will be awarded according to the NOR.
- 21.2 All competitors and coaches are required to attend at the opening ceremony and at the prize giving and closing ceremony. Prize winners not attending may forfeit their prize.

COURSE DIAGRAM



COURSE: Start – 1 – 2 – 1 – 2 – 1 - PE – Finish

S-flag: Start – 1 – 2 – 1 - PE – Finish

All distances and angles are approximate

Start line: Masts flying orange flags on the starting boats

Finish line: Mast flying a blue flag on start boat and mark with blue flag

Gates 1 and 2: Red inflatable marks

The Race Committee may at any time change a gate to an individual mark which shall be left to port.